

# FOR LEASE

1011 Post Road East | Westport,  
Connecticut

5,222 sq. ft. (divisible – 2,000 sf and 3,000 sf)

Price: \$40.00 NNN

## Jennings Plaza



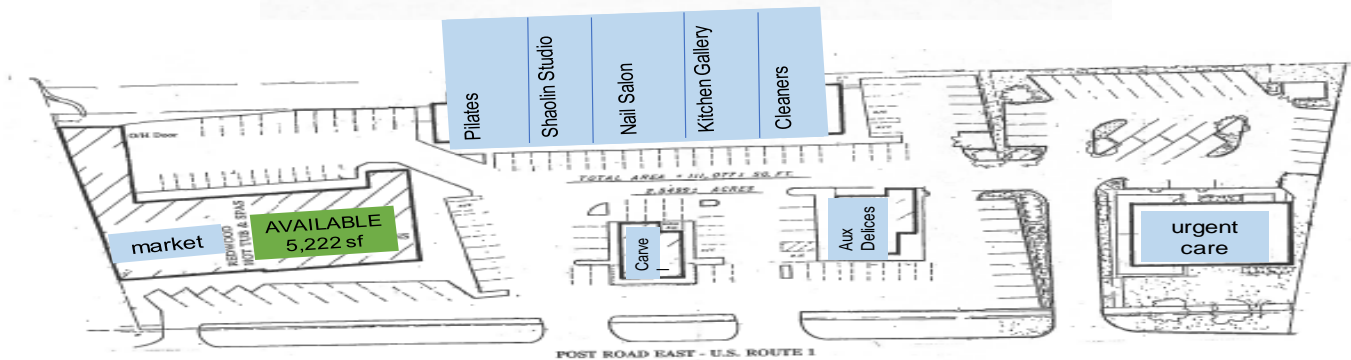
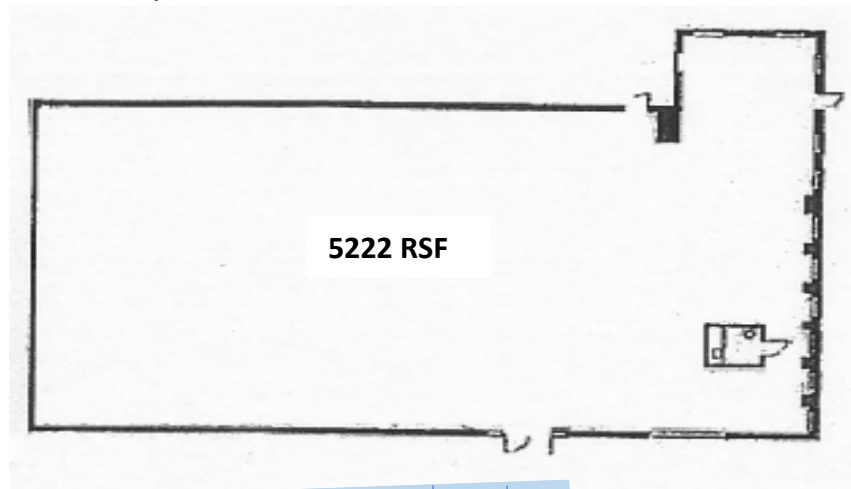
**Bayberry**  
Property Management  
& Leasing of CT, LLC

For additional information or to request a showing please  
call the Exclusive Agent, Ciara McConn at  
203.227.0041 ext. 1008 (Office)  
203.216.1824 (Cell)  
[ciara@bayberryproperty.com](mailto:ciara@bayberryproperty.com)

# MORE DETAILS

## Property Highlights

- Prominent Strip-Center located on Post Road East minutes from I-95
- End Cap Location! Great visibility; high ceilings; ample parking and located across from new Maserati dealership
- Other tenants: Aux Delices Café, Carvel, Westport Urgent Care and many more
- Across the street from Maserati dealership, Starbucks, Banks and more



**JENNINGS PLAZA**  
997-1045 Post Road East  
Westport, CT



**DISCLAIMER: All measurements are approximate for illustration purposes only**



**Bayberry**  
Property Management  
& Leasing of CT, LLC

For additional information or to request a showing please call the Exclusive Agent, Ciara McConn at  
203.227.0041 ext. 1008 (Office)  
203.216.1824 (Cell)  
[ciara@bayberryproperty.com](mailto:ciara@bayberryproperty.com)

Bayberry Property Management & Leasing of CT, LLC  
PO Box 320486, Fairfield, CT 06825